

Driving on Expressways

- 11.1 Characteristics of Expressway Driving
- 11.2 Entering an Expressway
- 11.3 Strategies for Driving on Expressways
- 11.4 Exiting Expressways
- 11.5 Special Expressway Problems

EXPRESSWAY DRIVING

- ❖ **Designed for low-risk higher-speed travel. Safer on expressways than other highways.**
- ❖ **fewer collisions for 5 reasons**
 1. Cross traffic is eliminated
 2. Has medians or barriers
 3. Pedestrians and slow vehicles are not permitted
 4. Wide shoulders and underpasses
 5. Signs to help anticipate decisions in advance



4 TYPES OF EXPRESSWAY INTERCHANGES



Clover leaf

Has a series of entrance and exit ramps that resemble the outline of a 4 leaf clover.

Trumpet Interchange

Is used where a side road forms a T intersection with an expressway.

Diamond Interchange

Used when a road that has little traffic crosses a busy expressway.

All Directional

Used in complicated intersections with high-volume traffic.

Cloverleaf Interchange



Diamond Interchange



Trumpet Interchange



All-Directional Interchange



Be a Smart Driver



It is important to remember that any point in an interstate or expressway system where there is a transition such as an entrance, an exit or an intersection of two or more major roadways is the most congested and potentially the most dangerous point.

Always be aware of additional problems at any of the interchanges you have just seen.

Safe Driving Strategies



- ▣ **Prepare yourself and your vehicle**
- ▣ **Build experience gradually**
- ▣ **Concentrate on the driving task**
- ▣ **Cooperate with other drivers**

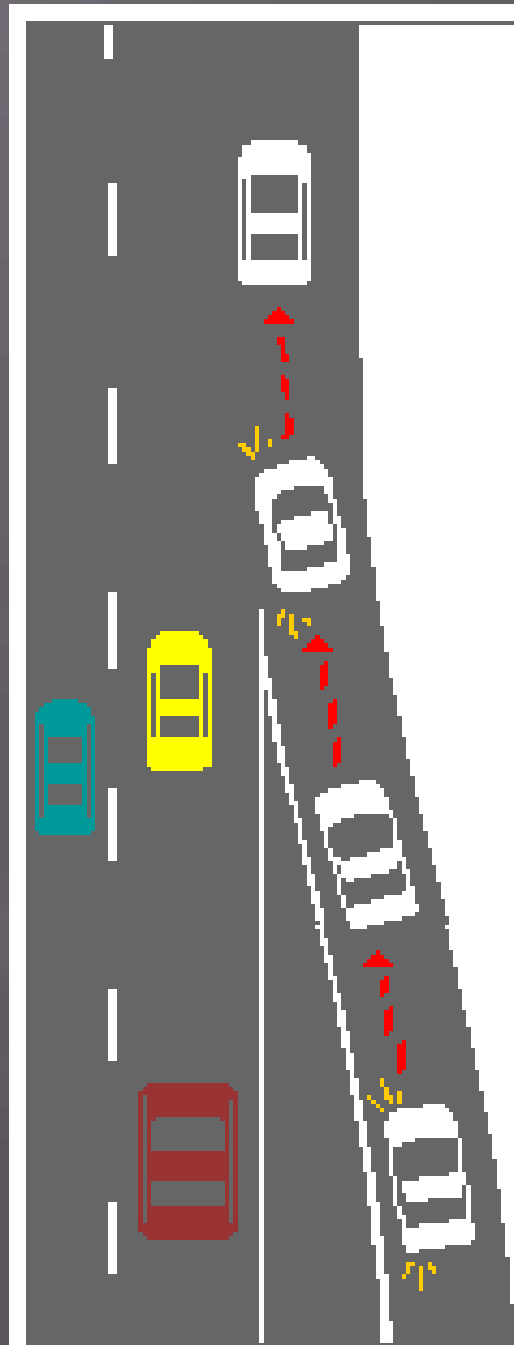


Until you gain experience, avoid driving in heavy rush-hour traffic.

EXPRESSWAY ENTRANCES

3 Parts

- I. Entrance Ramp
- II. Acceleration Lane
- III. Merging Area



STEPS FOR ENTERING

- 1) Make sure the entrance is the one you want. Look for signs.
(Wrong Way-Do Not Enter)
- 2) Check front and rear zones when on ramp. Signal, take quick glances through your left outside rearview mirror and over left shoulder to find gap in traffic where you can safely merge.
- 3) Once in acceleration lane, gradually increase speed. Continue to quickly glance over left shoulder and through outside rearview mirror. Decide when it is a safe time and place to merge into the gap in traffic.
- 4) Before entering the merging area, decide which vehicle to follow in the flow of traffic. As you enter the merging area, adjust speed to match traffic flow. Position your vehicle at a safe interval behind the vehicle you plan to follow. Merge smoothly.
- 5) Once on the expressway, cancel your signal and adjust to the speed of traffic. Keep a space cushion around your vehicle.



Strategies for Driving on Expressways

Lane Choice

Decide the best lane to use

Drive in the right lane, pass in the left lane

Left lane used for faster traffic

Use center lane when traffic is heavy

Drivers entering, as well as drivers on the expressway, share responsibility for protecting each other from conflict

Signs, Signals, Roadway Markings

Lane choice is based on information from expressway signs, signals, and roadway markings

Better able to maintain a safe path of travel and avoid making sudden last-second decisions if you

- Know your destination
- Read signs and roadway markings
- Always think ahead



Speed Limits

- Minimum Speed Limits
- Common Speed
- Wolf Packs



Following

3 Second Rule

Increase following distance when –

Following a large vehicle that blocks your vision

Following a motorcycle

Bad weather conditions

Driving in heavy traffic

Being tailgated

Driving a heavy vehicle or pulling a trailer

Operating a motorcycle

Entering or exiting an

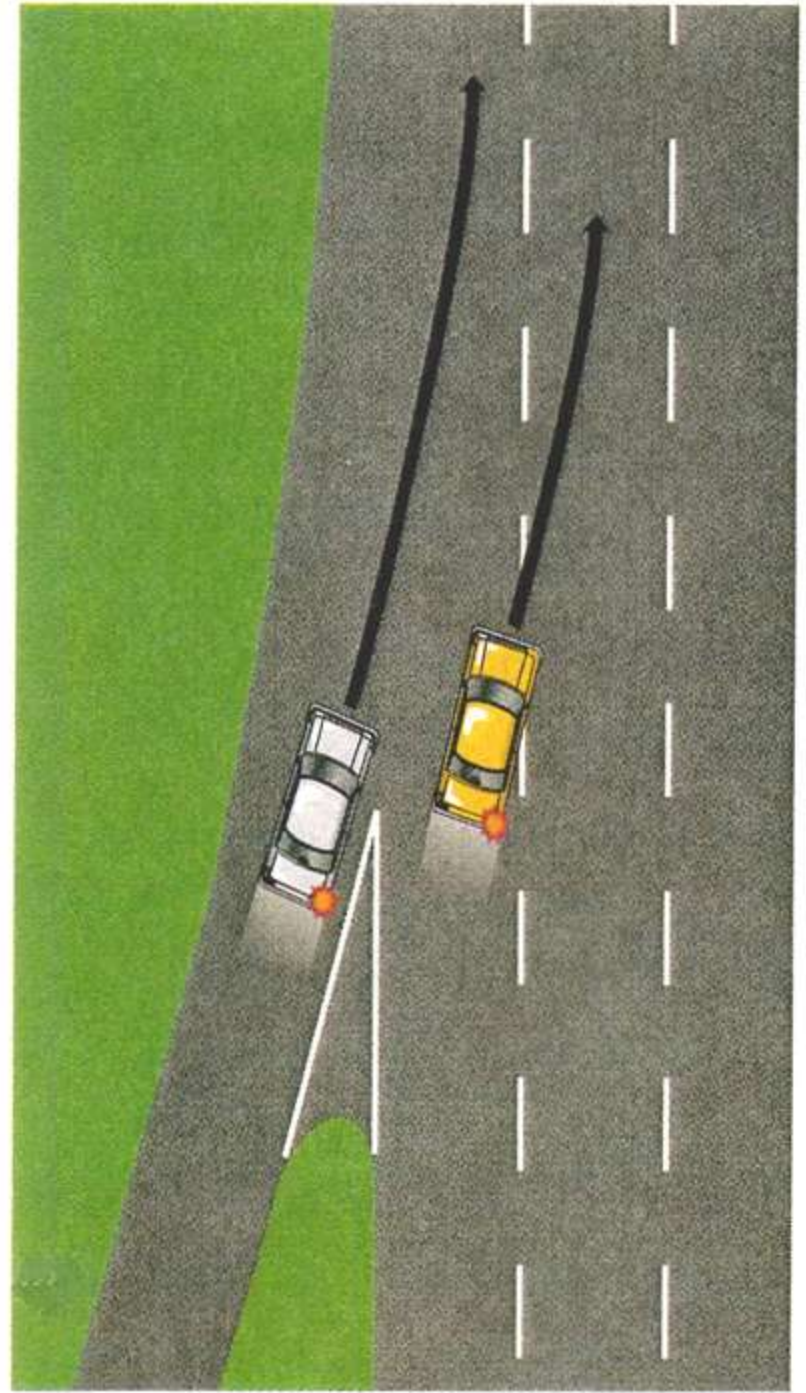
expressway

Lane Changing

Steps –

1. Change lanes one at a time. Signal every lane change whether or not other vehicles are present.
2. Check traffic in the outside and inside review mirrors. Check the blind-spot area in the direction you want to move.
3. If your path is clear, accelerate gently and move to the next lane.
4. Cancel your signal after you have changed lanes.



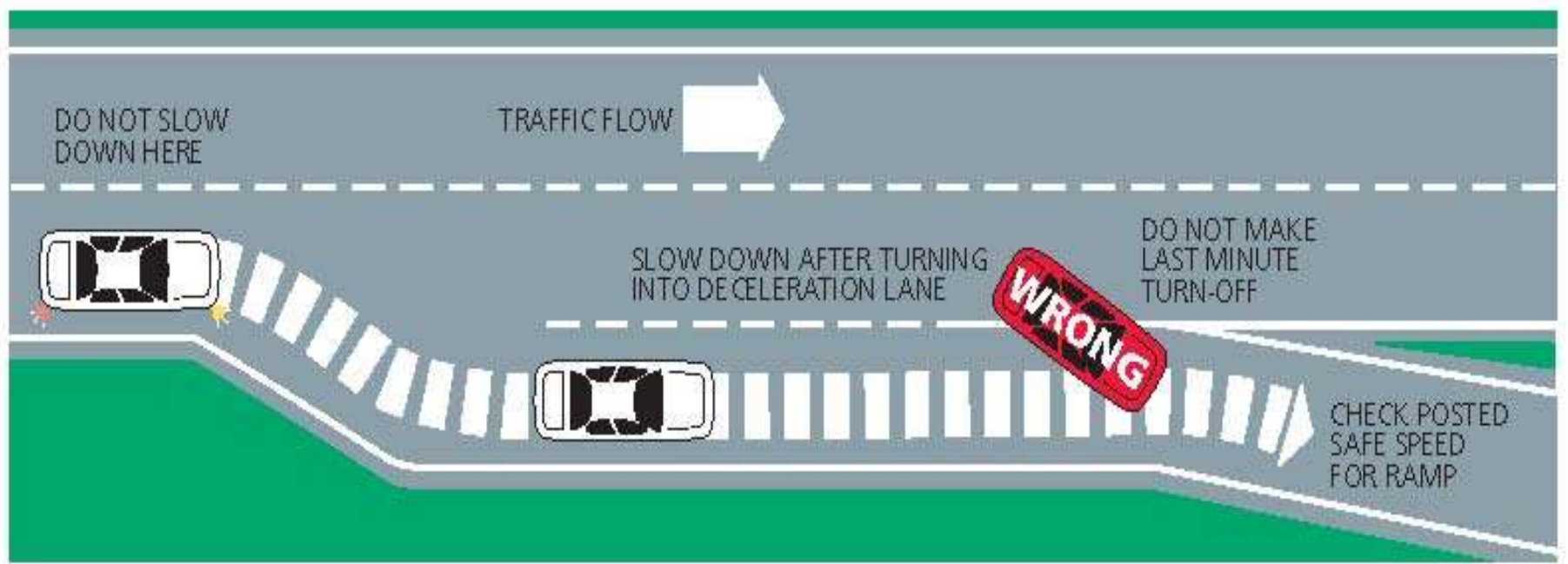
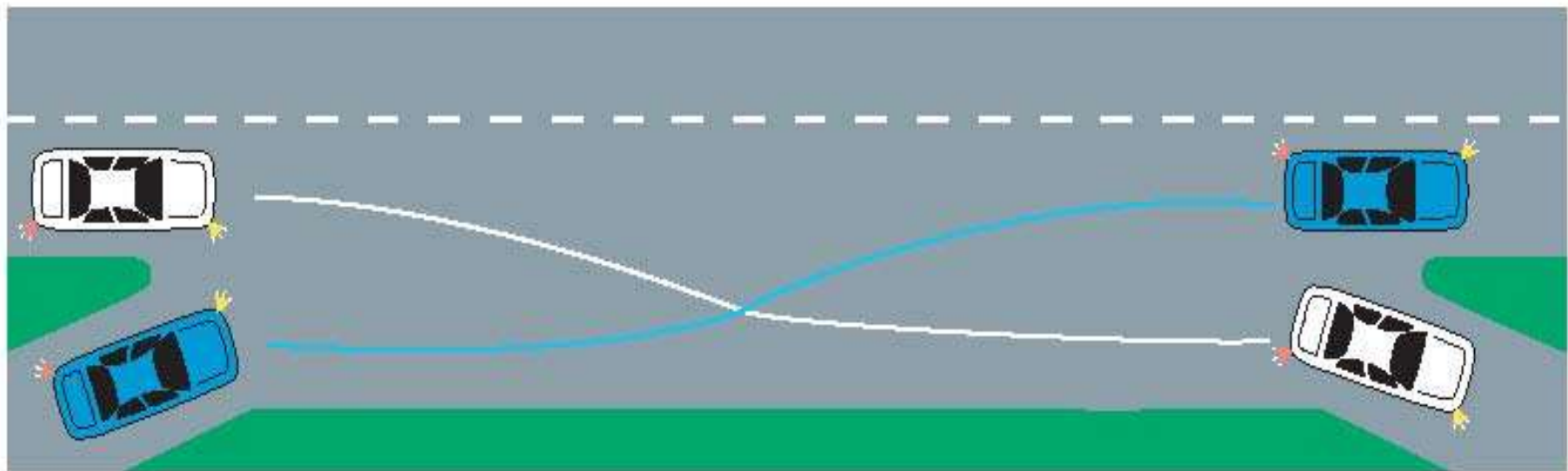


Exiting Expressways

Steps for exiting –

1. At least one-half mile before exit check front and rear zones. Signal and move into lane position 3 in the lane that leads into the deceleration lane.
2. Move into deceleration lane. Cancel your signal.
3. Flash brake lights to warn other drivers you are slowing. Check rear zones to know speed of following traffic. Slow gradually and keep a safe space cushion ahead and behind you.
4. Identify the exit-ramp speed sign. Check your own speed and adjust to the posted speed limit.





Special Expressway Problems



Driver Condition

- Highway Hypnosis
- Fall-Asleep Collisions
- Velocitation

Roadway Conditions

- Expressway through Cities
- Disabled Vehicle
- Roadway Repair
- Rural Interstate Highways
- Tollbooths

Using Expressways Safely

▣ 3 Key factors

1. **Cooperation Among Drivers**
2. **Concentration on the Driving Task**
3. **Use of the IPDE Process**

