

Driver Education
Classroom and In-Car Curriculum

Unit 6

**Basic Maneuvers in a
Low-Risk Environment**



Turning Around

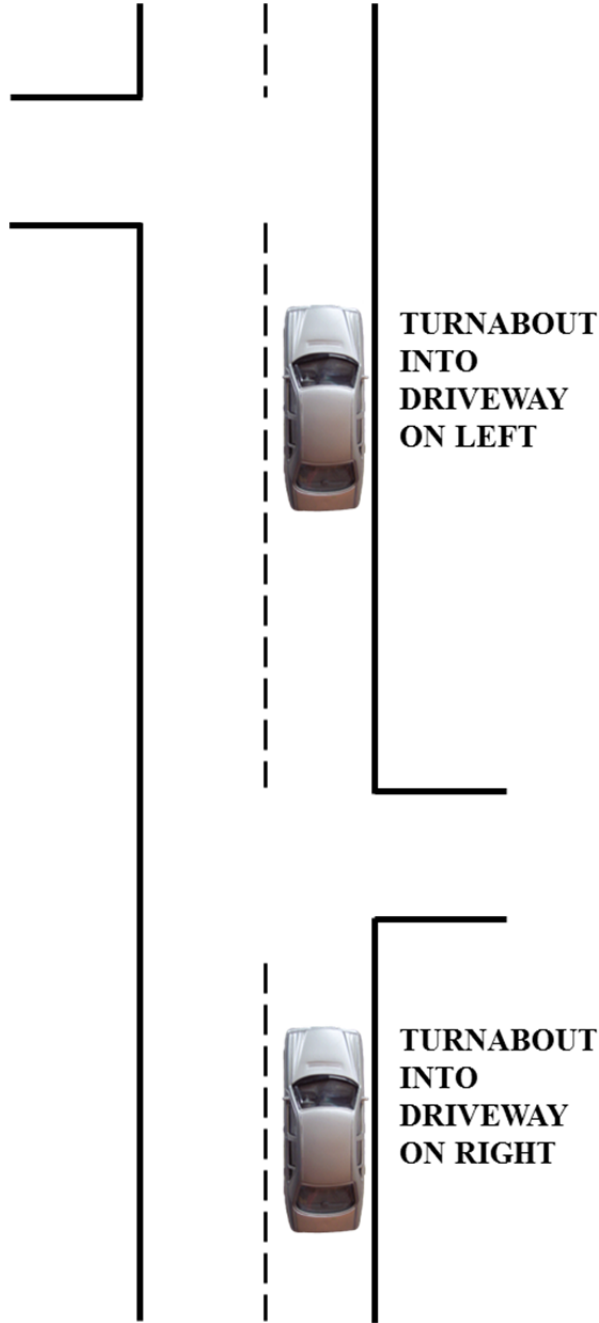
Worksheet 6.4

Diagram Turning Around

Name

Date

Directions: Draw arrows to show how you would complete the maneuver.



Unit 6 Basic Maneuvers in a Low-Risk Environment

Parking **Worksheet 6.5**

Parking Maneuvers

Name

Date

Directions: Indicate the wheel position for each maneuver, then list the procedures for each type of Hill Park.

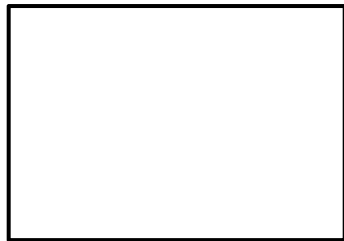
UP HILL WITH CURB



DOWN HILL WITH CURB



UP HILL WITH NO CURB



DOWN HILL WITH NO CURB



Unit 6 Basic Maneuvers in a Low-Risk Environment

Unit 6 Words to Know Matchup	Worksheet 6.7
-------------------------------------	----------------------

Name	Date
------	------

Directions: Match the clues on the left with the words in the list on the right. Place the matching letter in the blank to the left of the number.

_____	1. Should be obeyed first if there is also a crosswalk present.	A. Balance
_____	2. Pulling ahead slightly, after stopping at the legal position behind the stop line or crosswalk, and stopping again where visibility is improved.	B. Changing lanes
_____	3. White lines found at intersections to allow for larger vehicles to complete turns.	C. Crosswalk
_____	4. Defines the area where pedestrians may cross the roadway	D. Double stops
_____	5. Turning the vehicle around in a limited space by moving in a series of back and forward movements.	E. Inertia
_____	6. The contact between the tire and road surface.	F. Staggered stops
_____	7. The distribution of the weight of the vehicle on the chassis or the frame, wheels and body of the vehicle.	G. Stop line
_____	8. A movement either to the left or to the right, which involves steering actions and generally a change in speed.	H. Three-point turnabout
_____	9. A turnabout made by first backing into a driveway or alley.	I. Traction
_____	10. The tendency of an object in motion to resist any change in direction and of an object at rest to resist motion.	J. Two-point turnabout